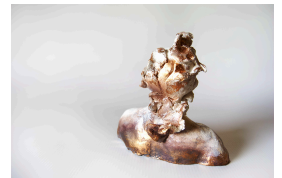
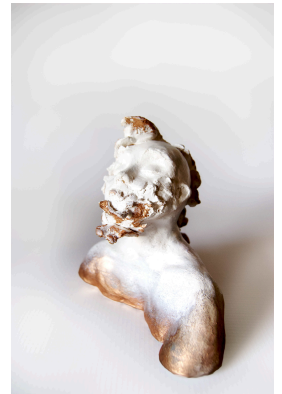
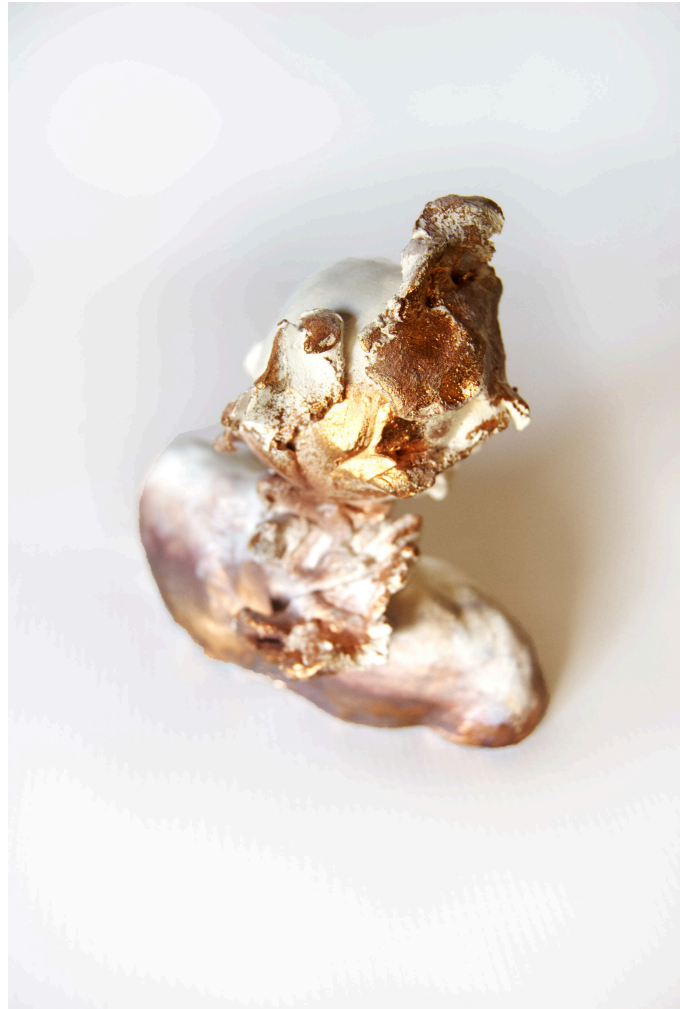




Satire I

R 1,900.00





The political series titled Satire comprises of a body of work created in clay which stresses the fragility of our times. The work embodies impressions within our society of how the individual is affected by the politicians agenda in a ricochet cascade of cause and effect. The series comments on how the South African government is failing the people thanks to corruption, greed and destruction.

Frame	None
Medium	Hand-painted fired clay
Height	13.00 cm
Width	13.50 cm
Artist	Jessica Michelle Le Roux
Year	2022

