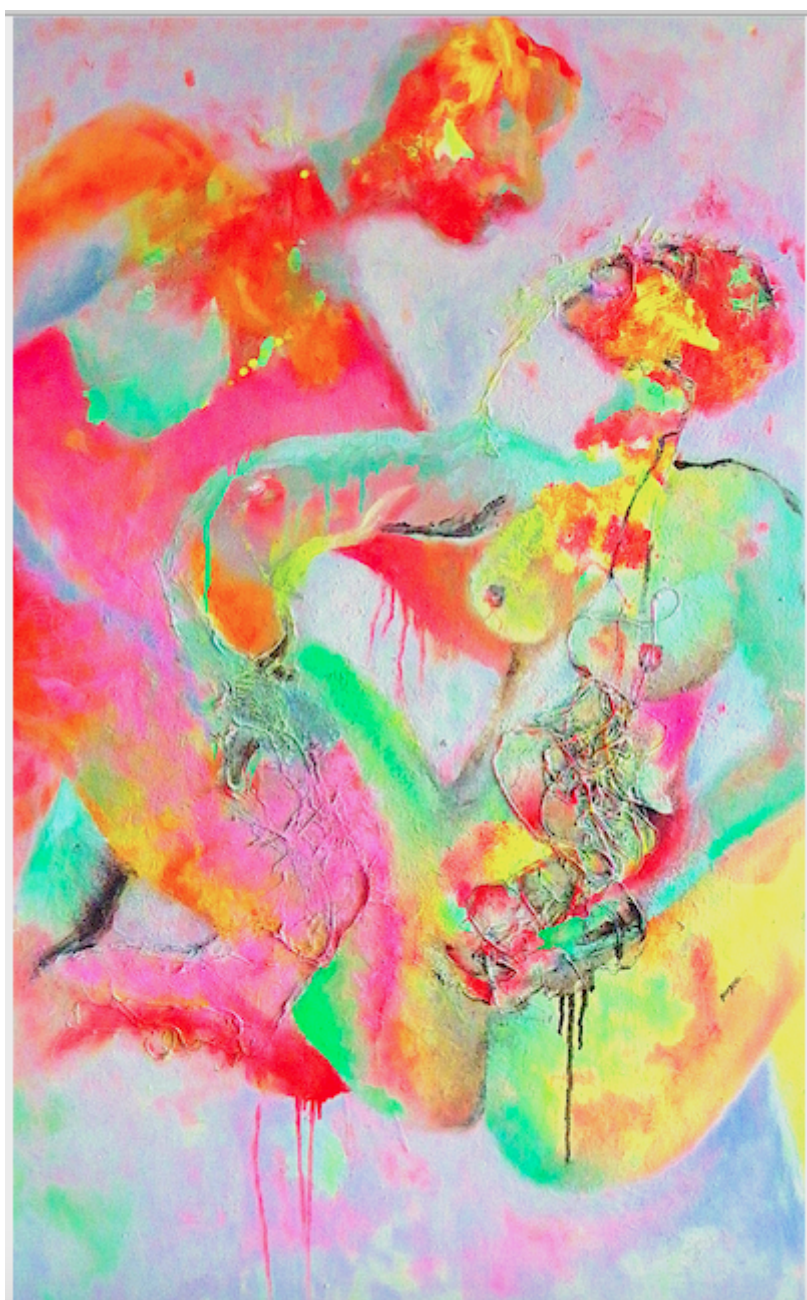




Oui

R 78,500.00



Ivorian visual artist and painter Claudie Titty Dimbeng is based in Paris and through her dynamic series of paintings called: 'The Gynaeceum' the artist intimately explores women's sexuality and its true expression, as experienced by women without shame or reprisal.

Dimbeng's Technique & Approach to Painting

'Mixed Art Relief' is my mixed media painting technique which consists in producing an abstract or figurative work, where materials, forms and colors merge, thanks to the sanding and the sfumato, contributing to the highlighting of my themes: gynaeceum, African spirituality, and contemporary issues.

Inspired by Vohou-vohou, it employs materials, such as raffia or tapa, which bring more texture to the color, and the subject gradually reveals itself. When the canvas is "sculpted", all facets of life spring through symbols. In my case, it will be about procreation, animal, vegetable or human forms. Thanks to the materials used, the Mixed Art Relief links the original culture of the artist to that of his adopted and crossing territories, and promotes intercultural dialogue, which creates value. At a time when the question of identity and otherness can raise questions, even unleash passions, “Dialogue therefore consists in allowing people to accept difference”.

My interest today is particularly focused on the forms of iteration and self-similarities at different scales, produced by this technique. My research on this phenomenon led me to the mathematician Benoît Mandelbrot, father of fractals, and to the Fractalist movement that question me. How do we evolve in this geometry of nature? Through what type of social and cultural interactions? What impact do we have on our universe governed by the roughness of forms, outside the framework of the smooth and ordered space of Euclidean geometry? How are we fractal beings?' - CLAUDIE TITTY DIMBENG

Frame	None
Medium	Oil, acrylic, coating, tapa, raffia on canvas
Height	130.00 cm
Width	81.00 cm
Artist	Claudie Titty Dimbeng
Year	2015

