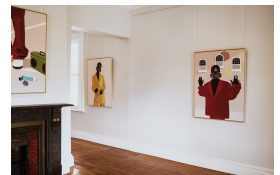




Efe Church

R 92,500.00



'My Church Clothes' refers to the deep-seated weight placed on new or Sunday best garments in a cultural context. Attending church has been a large part of Nigerian culture for many years (and this is certainly

true of Muoh's childhood). The chance to parade one's latest fashion buys is synonymous with church attendance, and her depiction of a subject in an oversized suit talks to this spiritual yet social occasion. Signed by artist.

Frame	Unframed 121 x91 x 0.1 cm Framed 124.5 x 94.5 x 5 cm
Medium	Mixed Medium, acrylic on canvas.
Height	124.50 cm
Width	94.50 cm
Artwork Height	121
Artwork Width	91
Artist	Azuka Muoh
Year	2022

