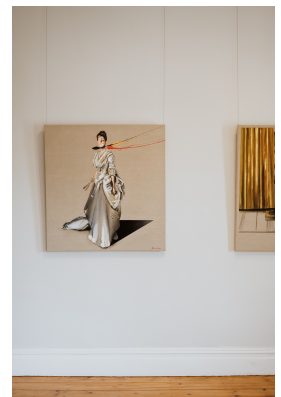




**PORTRAIT OF MARGARET STUYVESANT
RUTHERFORD WHITE**

Call for Price



Sargent was a portraitist who painted many members of the aristocracy and his mastery around painting fabrics was extraordinary. Smit reflects his staggering skill by painting directly onto Belgian linen and layering the paint thickly at the bottom of the canvas to create a heavy drapery effect.

Frame	None
Medium	Oil & spray on Belgian Linen
Height	96.00 cm
Width	90.00 cm
Artist	Frans Smit
Year	2022

