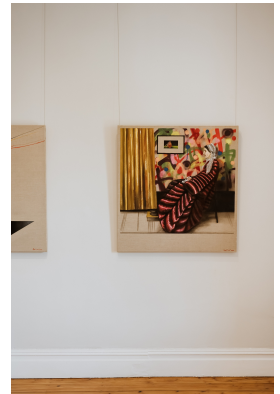




**Whistler's Mother - After James Whistler**

**Call for Price**



A chance first sighting of the original 'Whistler's Mother', by James McNeill Whistler, at the Musée D'Orsay led to Smit's own foray into modulating tones of single colour – especially black. "The room is rather macabre, I thought I'd liven it up for her".

Frame	None
Medium	Oil & spray on Belgian Linen
Height	96.00 cm
Width	90.00 cm
Artist	Frans Smit
Year	2022

